



# Pittsburgh Regional Business Credential: A Public / Private Partnership

Special Thanks to:

**Jonathan Henry**

City of Pittsburgh

Office of Emergency Management

(412) 255-2633

[Jonathan.Henry@city.pittsburgh.pa.us](mailto:Jonathan.Henry@city.pittsburgh.pa.us)



# Agenda



- ▶ Background / Importance of Credentials
- ▶ Credential Q&A
- ▶ Application Process
- ▶ Format of Credential
- ▶ Future Developments
- ▶ Discussion



# Background / Importance of Credentials



- ▶ Originated for public service personnel
  - Military and non-military
- ▶ Credentials have been used for
  - Positive identification
  - Logical access to secured (government) systems
  - Physical access to secured / restricted areas
- ▶ Businesses use-access to otherwise restricted areas
  - Damage mitigation / assessment / salvage
  - Retrieval of critical business materials
  - Other initial recovery activities



# Credential Q&A



- ▶ *What is the Pittsburgh Regional Business Credential?*
- ▶ *Who sponsors it?*
- ▶ *How is it activated? How will we know when restricted areas become open to holders of the Credential?*
- ▶ *When can I use the Credential?*



# Credential Q&A



- ▶ *Which of my business locations are covered by the Credential?*
- ▶ *Who controls access and how will they know to give holders of the Credential access when appropriate?*
- ▶ *Does the Credential guarantee me access?*
- ▶ *What happens if I present my Credential but I am still denied access?*



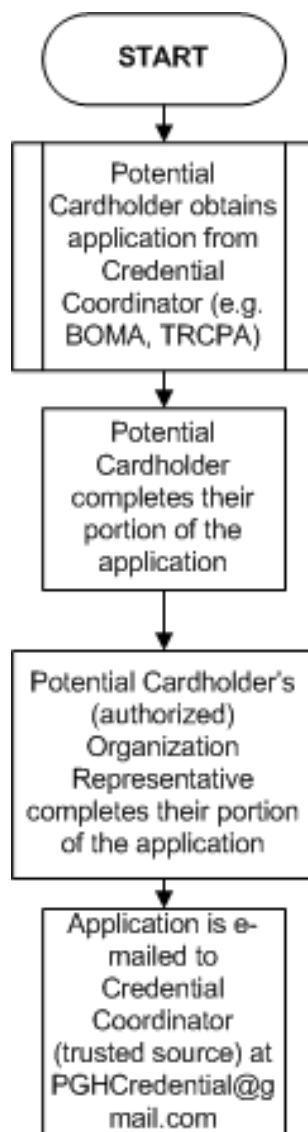
# Credential Q&A



- ▶ *How much does the Credential cost?*
- ▶ *How many Credentials can be issued to my company's employees?*
- ▶ *When does the Credential expire?*
- ▶ *What if a Credential is lost or stolen?*
- ▶ *Who is liable if a Credential holder is injured while in the restricted area?*
- ▶ *How can my company enroll?*

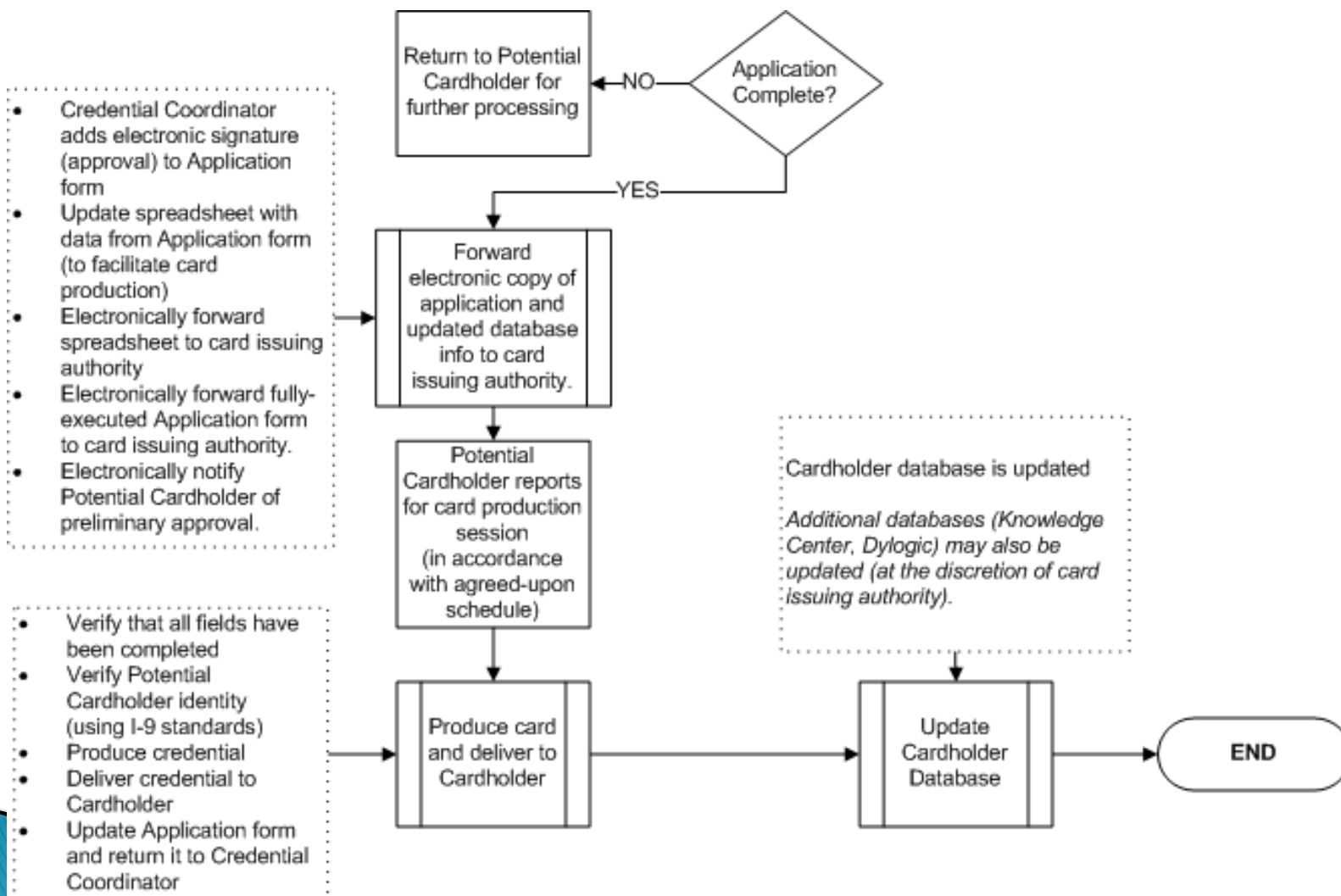


# Application Process Flow (1 of 2)





# Application Process Flow (2 of 2)







# Format of Credential



- ▶ Pittsburgh Regional Business Credential meets the FIPS 201 (Personal Identity Verification) Standard
- ▶ Standard format among business community (future)





# Future Developments



- ▶ Future partners:
  - Pittsburgh Regional Business Coalition for Homeland Security (PRBCHS)
  - Information Systems Security Association (ISSA)
  - Building Owners and Managers Association (BOMA)
  - FBI – InfraGard Pittsburgh
  - American Society for Industrial Security (ASIS)
  - Others?
- ▶ Porting credentialing data to the Knowledge Center
- ▶ Broader availability – throughout Region 13
- ▶ Self-production



# Discussion